



*Friends Shops Auxiliary Division – Celebrate 90 Years*



**Friends**  
of the Women's &  
Children's Hospital Inc.

# Annual Report 2016–2017

Cover Photo: *Shops Auxiliary Division*



[www.facebook.com/FriendsWCH](http://www.facebook.com/FriendsWCH)



# Contents

---

<b>President's Report</b>	2
<b>Governance</b>	5
<b>Objectives and Purposes</b>	5
<b>Structure</b>	5
<b>Management Committee Membership</b>	6
Council of The Friends of the Women's & Children's Hospital Inc.	6
State Council of the Auxiliaries Division	7
Committee of the Queen Victoria Auxiliary Division	8
Management Committee of the Shops Auxiliary Division	9
Administrative Support	9
<b>Report on Activities</b>	10
<b>Business Manager's Report</b>	10
Contributions to the Women's and Children's Health Network	10
New Orthotics System	10
Achievements for 2016–17	11
Facilitating External Donations	12
The Friends of WCH Person and Family Centred Care Passion Projects	12
Regional Conference Attendance	14
H.U.G (Helping You Give) Initiative	14
Goals for the Year Ahead	15
<b>Auxiliaries Division President's Report</b>	16
Summary of Funds Raised by Each Auxiliary Group	17
<b>Queen Victoria Auxiliary Division President's Report</b>	18
<b>Shops Auxiliary Division President's Report</b>	19
<b>New Acquisitions by the Women's &amp; Children's Hospital</b>	21
<b>Recognition of Donations</b>	22
<b>Recognition of Service</b>	24
<b>Life Membership 2016</b>	24
<b>Recognition of Service</b>	26
<b>Auditors Financial Report</b>	30

---

# President's Report



It gives me great pleasure as President of The Friends of the Women's & Children's Hospital Incorporated (Friends) to present the 25th Annual Report.

During this past year we have achieved so much. We continue to grow and improve the way in which we function as a charitable organisation.

We have been successful in obtaining the DGR Status after a very lengthy process. The Website was completed and launched increasing our profile. This in turn, has created a positive awareness and interest in who we are and what we do, resulting in growing support for Friends.

Friends continue to support the Hospital's staff, patients and their families with the same dedicated commitment that we have always provided.

Deb Arnold has continued to provide support and expertise to Friends for which we are very grateful. Deb conducted the financial Audit for Friends again this year.

The support provided by the Media Interns for our staff has been greatly appreciated. This support was provided in a voluntary capacity.

We continue to work through the Divisional Rules for each of the divisions of Friends. This has taken longer than anticipated due to the fact that we have numerous other agendas to address.

The WCHN Passion Projects funded by Friends has been very successful. Andrew has given a detailed report on these projects in the Business Manager's section of this report.

The H.U.G. initiative, which was funded by sponsorships, was a successful project for Friends to be involved with. Please find a detailed report in Andrew's section of the report.

We finalized the preparations for the Hats off to Adelaide Millinery Convention Luncheon to be hosted at SAJC in July. This event is a combined fundraiser with the Milliners Association and proved very time consuming.

Friends were honoured to have Amanda Blair open our 24th Annual Conference. We thank Associate Professor Ross Haslam, Friends Patron and Amanda for presenting Life Memberships to all worthy recipients. Jill Michelson was an interesting Guest Speaker and we also thank Jill for her attendance. I extend congratulations to all of our Friends who have received Life Memberships and Service Awards in 2016. Your many hours of dedicated service are to be commended and are appreciated by Friends, the Executive and staff of the WCHN.

The Friends Council manages, advises and promotes communication and understanding between the Divisions and the Women's and Children's Health Network. I would like to thank all the Divisional representatives for their continued dedication, loyalty and commitment throughout another extremely busy year. I am honoured to be a part of a team who work together in such a supportive and professional manner. We continue to work towards increasing and improving our profile so that people will seek to support our wonderful organisation.

I would like to thank Heather Wheatley, Vice President Friends for her dedication and support.





Friends Council have representation on the WCHN Consumer and Community Partnership Council. This gives us a voice and keeps us updated on relevant information. Our representative is able to raise our profile through this network. I would like to extend our appreciation and thanks to Jo Balderstone for representing the Friends on this Council.

I would like to thank all those that made a donation to the Friends throughout the year. Your support is greatly appreciated. Please refer to Friends Donations Received Section for a comprehensive breakdown.

The three Divisions of Friends have once again provided outstanding support to the Health Network. Our financial contributions are sincerely appreciated and needed as funding becomes less accessible.

## Auxiliaries Division

The members of the Auxiliaries Division have raised the fantastic total of \$123,000 during the last financial year. These wonderful members are to be commended for the way in which they continue to work hard to support the Women's and Children's Hospital. They raise funds in various ways. Unfortunately we are continuing to see the closure of some auxiliaries for a variety of reasons. We are currently putting thought into how we can turn this around, making it a priority for next year.

## Shops Auxiliary

The dedication of these wonderful members is truly remarkable. Next month the Shops will celebrate their 90th birthday and I would like to take this opportunity to thank all the volunteers for this fantastic achievement. They are a cheerful, happy group obviously very proud of their achievements, and rightly so. They continue to embrace any changes necessary to provide a valuable service within the hospital. This financial year they contributed the amazing total of \$380,000. We continue to try and find ways to increase their volunteer numbers.

## Queen Victoria Auxiliary

The members of this auxiliary raised the fantastic total of \$32,877 through their hard work and dedication to purchase equipment for the Women's and Babies Division.

Their annual fashion parade and film nights are always popular. They are to be commended for their efforts.

We continue to look for ways to increase their membership numbers. The trend of volunteer's becoming harder to attract is a challenge for all of us.

## Friends Fellowships

The Fellowships are offered for research, study or professional development to WCHN non-medical staff who wish to undertake such a program in Australia or overseas and who have not received another WCHN based grant in the previous 12 months. Applicants are selected each year subject to approved submissions.

### **The successful applicants for 2016–17 are;**

**Dana Wright** – *State-wide Transition Coordinator, Paediatric Rehabilitation WCHN*

Dana's abstract to present research findings at the 2016 Rehabilitation Medicine Society of Australia and New Zealand 1st Annual Scientific Meeting in Melbourne. The presentation is in the form of a free paper titled "Exploring the experience of care transition for SA youth with rehabilitation requirements moving into adult health services. Are we doing well?" This will provide an opportunity to network with other colleagues working in the field of rehabilitation and gain skills and knowledge from other researchers and/or presenters.

**Robyn Welsh** – *Clinical Practice Consultant, Disability WCHN*

Robyn would like to undertake the Joanna Briggs Institute Evidence- Based Clinical Fellowship program commencing August 22nd 2016. The institute's focus is to promote and support evidence based health care practices and to assist with the improvements of global healthcare outcomes.



# President's Report

The course is conducted over 6 months with 2 x five day training workshops and a project over the intervening months. The course focuses on developing auditing and leadership skills which Robyn will use to assist with safety and quality audits.

## **Sean Turner** – *Director of Pharmacy WCHN*

Sean would like to visit 4 pharmacy departments in a number of leading North American paediatric hospitals. The primary aim is to review pharmacy service provision and in particular their adoption of automation and information technology systems that have led to improvements in patient safety. The knowledge gained will help influence the design and development of the new Women's and Children's Hospital and to ensure that the WCHN pharmacy services meet the needs of the South Australian public.

The knowledge and experience gained from their Fellowship will be of great benefit to patients at the Women's and Children's Hospital.

I look forward to their presentations at this year's Annual Conference.

## Staff Support

Words cannot express the gratitude that I have for our wonderful staff. Their support, loyalty and dedication is to be commended.

Friends Business Manager, Andrew Wade continues to work towards improving our organisation. He has a positive attitude which reflects on all of us.

Auxiliaries Co-ordinator, Sonia Davies is very efficient and well organised in her work supporting the Auxiliaries. She is an asset to our team.

Eva Kalmar has continued to assist us by sharing the position with Sonia. Eva is cheerful and obliging and we appreciate the work she does for Friends.

Phil Robinson, Executive Director Corporate Services, continues to support The Friends and is committed to our organisation. I am very appreciative of, and value his expertise and advice along with the work he does on our behalf.

Allan Ball, Director, Consumer and Community Engagement Division WCHN, is committed and supportive of Friends, I appreciate the work that he does on our behalf.

I sincerely thank you all for the support that you have given to me throughout the year.

In conclusion, I sincerely thank you all for your time, dedication and commitment to providing support and financial assistance to the Women's and Children's Hospital. I wish you all every success in your future fundraising efforts. You are all wonderful ambassadors increasing community awareness and knowledge of Friends and the services and care provided by the WCHN.

I am once again in awe of your remarkable dedication. It is a privilege to represent you as President of Friends.

## **Pauline Linke**

*President Council*

*Friends of the Women's and Children's Hospital Inc.*



*Members of the Official Party for The Friends of WCH Inc Annual Conference 2016 from left to right: Ms Jill Michelson, General Manager Marie Stopes International, Ms Amanda Blair Conference Opener, Naomi Dwyer, CEO WCHN, Mr Phil Robinson, Executive Director Corporate Services WCHN, Pauline Linke, President of The Friends of WCH Inc, Professor Ross Haslam, AO Friends Patron and Mr Allan Ball, Director Consumer and Community Engagement WCHN.*



# Governance

The Friends of the Women's & Children's Hospital Inc. (Friends of WCH) is an association of volunteers who support and fundraise for the hospital community.

Our Friends are all active members of the following divisions –

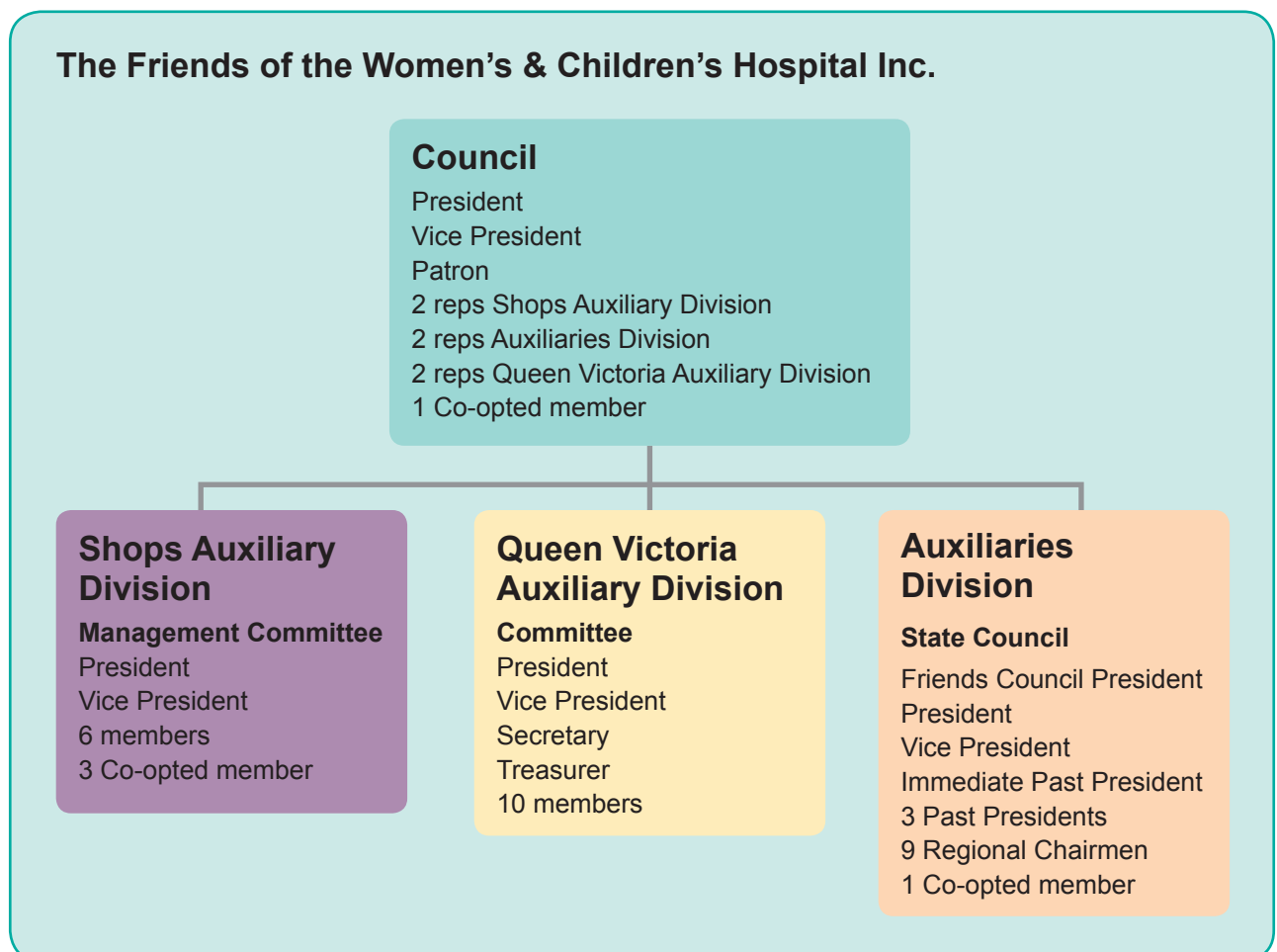
- » Auxiliaries Division
- » Queen Victoria Auxiliary Division
- » Shops Auxiliary Division

The association is overseen by Council, made up of representatives from all three divisions.

## Objectives and Purposes

- » To assist the staff of Women's & Children's Hospital to:
  - Enhance and promote the health of women, children and young people by specialising in care, research, education and health promotion.
  - Assist Women's & Children's Hospital to become a leader and innovator and achieve local, national and international recognition.
- » To give services and financial assistance to Women's & Children's Hospital.
- » To add to the comfort and peace of mind of the patients of Women's & Children's Hospital and of their families.
- » To foster and encourage a better understanding of the services which Women's & Children's Hospital provides.
- » To provide financial assistance for improvement and expansion of Women's & Children's Hospital facilities and equipment.

## Structure



# Governance

## Management Committee Membership

### Council of The Friends of the Women's & Children's Hospital Inc.

Dr Ross Haslam AO,	Patron
Pauline Linke,	President
Heather Wheatley	Queen Victoria Auxiliary Division, Friends Vice President
Margaret Markham	Shops Auxiliary Division, President
Dorothy Sandland,	Shops Auxiliary Division
Nadine Olafsen	Auxiliaries Division, State President
Kaye Steer	Auxiliaries Division, Vice State President
Mary Haas	Queen Victoria Auxiliary Division, President
Jo Baulderstone	Shops Auxiliary Division (co-opted)



*The Friends of the WCH Inc Council members from left to right Kaye Steer, Dorothy Sandland, Hetty Gardenier, Pauline Linke, Jo Balderstone, Heather Wheatley, Nadine Olafsen, Absent Mary Haas and Margaret Markham.*





## State Council of the Auxiliaries Division

Nadine Olafsen	State President
Kaye Steer	State Vice President
Pauline Linke	Friends President
Pauline Arbon	Immediate Past President
Park Heitmann	Past State President
Leonie Hore	Past State President
Barb Lamkin	Past State President
Jill Kaesler	Chairman, Region 1 (Adelaide Suburbs, Hills & South Coast)
Dianne Chivell / Sue Dunn	Chairman, Region 4 (Barossa Valley & Mid North)
Val Fewster	Chairman, Region 6 (Riverland)
Shirley Waters	Chairman, Region 7 (South East)
Raelene Lamond	Chairman, Region 8 (Northern)
Marion Bartholomaeus	Chairman, Region 10 (North West)
Ros Michell	Chairman, Region 11 (Eyre Peninsula)
Julie Tonkin	Chairman, Region 12 (Yorke Peninsula)
Gaynor Goold	Co-Opted Member



*The State Council Members from left to right FRONT ROW; Pauline Linke, Leonie Hore, Nadine Olafsen, Park Heitmann, Gaynor Goold. BACK ROW Raelene Lamond, Kaye Steer, Christine Andrews, Sue Dunn, Julie Tonkin, Pauline Arbon, Marion Bartholomaeus. ABSENT Barb Lamkin, Val Fewster, Ros Michell, Shirley Waters and Jill Kaesler.*

### Committee of the Queen Victoria Auxiliary Division

Mary Haas	President
Kerin Haslam	Vice President
Heather Wheatley	Secretary
Judy Burchard	Treasurer
Anne Bilyk	
Aggie Bampton	
Penny Lenthall	
Mary MacKenzie	
Kathy Orfanos	
Bronwyn Plowman	
Chris Sedunary	
Di Moore	
Briony Williams	



*The Queen Victoria Auxiliary Division members from left to right Mary Haas, Penny Lenthall, Judy Burchard, Kerin Haslam, and Di Moore. Absent Kathy Orfanos, Chris Sedunary, Bronwyn Plowman, Heather Wheatley, Anne Bilyk, Mary MacKenzie, Briony Williams and Aggie Bampton.*



## Management Committee of the Shops Auxiliary Division

Margaret Markham	President
Hetty Gardenier	Vice President
Beverley Graham	
Dorothy Sandland	
Kath Coupe	
Dennis Floyd	
Di Macrae	
Thea Milner	
Daphne Moosha	
Jodie Hoffmann	
Karen Wadwell	



## Administrative Support

Sonia Davies & Eva Kalmar	Auxiliaries Coordinator The Friends of Women's and Children's Hospital Incorporated
Andrew Wade	Business Manager The Friends of Women's and Children's Hospital Incorporated



Sonia Davies



Eva Kalmar



Andrew Wade





# Report on Activities

## Friends Business Manager's Report 2017

The financial position for The Friends of the Women's and Children's Hospital Incorporated (Friends) as at 30 June 2017 is a net surplus of \$82,194.

Total income for 2016/17 was \$1,273,216 with donations to the Women's and Children's Health Network (WCHN) of \$257,155 for this financial year and \$100,000 for the new Orthotics System held over for payment in the 2017/18 financial year.

The total amount raised includes \$380,000 from the Shops Auxiliary Division, \$32,877 from the Queen Victoria Auxiliary Division and \$123,000 from the Auxiliaries Division for this financial year and \$140,000 from funds raised during the 2015/16 financial year. These funds were transferred into the Friends operating account for distribution to the hospital.

External donations totalled \$15,458.75 consisting of \$4,400 HUG, \$4,030 in general donations from the website, \$5,718.75 for specially targeted donations to hospital wards or departments, \$500 business donation and \$810 from bequests. Sponsorships were also received valued at \$3080. For a comprehensive list of all donors please refer to page 22 and 23 Recognition of Donations of the report.

This year, the amount of \$3,806 will be claimed back from the Australian Tax Office for Goods and Services Tax (GST) paid on expenses. Being able to claim this reimbursement is as a direct result of valid tax invoices being collected by Treasurers and forwarded to the Friends office. The Friends office are not claiming the full amount of GST paid annually due to all tax invoices not being forwarded to the office by the Auxiliaries Treasurers.

## Contributions to the Women's and Children's Health Network

As I reported in last year's Annual Report the method in which money is donated to the WCHN by Friends has changed due to the changes required to the Friends Constitution.

The Friends Council, through consultation with

the Divisional Committee's selected what items they approved for funding. The WCHN then provided invoices to Friends for the specific items selected (please refer to the New Acquisitions by the Women's & Children's Hospital section of the report)

The Queen Victoria Auxiliary Division continued their process of selecting what equipment they would like to support the purchase of and released funds direct from their account to the Women's and Babies Division of the WCH. These items are also listed in the New Acquisitions by the Women's & Children's Hospital section of the report.

As a result of cheques no longer being presented to the WCHN, administrative costs (include Friends staff wages) for the Friends office, have been invoiced to Friends throughout the year.

To see the breakdown of these costs please refer to the Statement of Comprehensive Income by Division (Central Account) on page 34 of this report.

## New Orthotics System

In 2016 the Friends launched a fundraising campaign to raise \$100,000 for a new Orthotics System for the WCH. Thanks to the amazing work achieved by all Friends volunteers, members and our generous community supporters this target has been reached.

As a result the purchase of a scanner, foot design software and the foot orthosis milling machine, which is the first step towards becoming a centre of excellence for orthotics and prosthetics has been approved for purchase.

Whilst the funds for the system will be allocated from the 2016/17 financial year, payment will not be made to the hospital until the end of 2017.

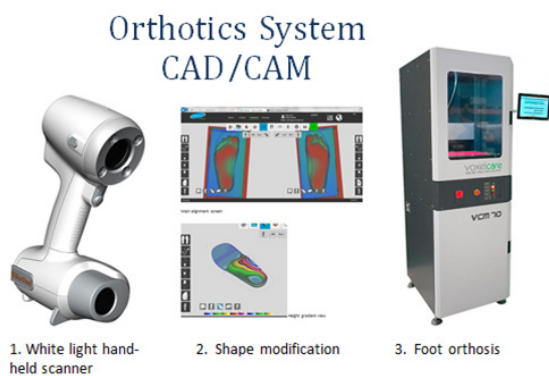
The computer-aided design and computer-aided manufacture (CAD/CAM) negates the need for taking plaster impression moulds in most cases and makes the design process fast, clean, precise and reproducible, with changes trackable over time. The CAM (computer aided manufacture) component of the proposed system is a small milling machine that produces custom-made foot orthoses with a turn-around time of less than 1 hour rather than 2 weeks.





Fund raising (if approved) will continue over the next 12 months to support the purchase of a Positive Model Carver for shape acquisition modification and devise design for all other parts of the body as the new system can only carve foot orthosis at this point.

The complete system has the potential to revolutionise the way orthotics and prosthetics are provided in this large, sparsely populated state.



## Achievements for 2016/17

### Friends Website Launch

The new Friends website was launched on the 27th July 2016. It extends current resources for members and recognises the contribution the Friends members, volunteers and supporters make towards the WCHN. It is the one-stop-shop for information about the Friends and how others can get involved.

The launch included the demonstration of the Ultrasound Scanning machine which ties together the Paediatric Rehabilitation Botulinum (Botox) Toxin Program by allowing for greater treatment accuracy for new ultrasound guided injections.

Thank you to our sponsors on the day which included Radiometer Pacific and SonoSite Australasia Pty Ltd.

The Friends would also like to recognise and thank Wallace Long, Director C2M Professional Services Marketing for his professional support and guidance in developing a very responsive and informative site.



### Fully audited Annual Report

A fully audited Annual Report for Friends was produced in October 2016 for the 2015/16 reporting period. Considerable work was done by Divisional Management Committees and Treasurers to achieve this outcome. The result of this effort was a report to members that provided clarity and transparency about the Association's financial position. This has meant that Friends was able to comply with the Collection for Charitable Purposes Act 1939 and the Australian Charities and Not-for-profits Commission (ACNC) Act 2012 requirements.

### Register of Members

The Volgistics database continues to be updated and provides a vital link between the Friends office and our members. As a result the Friends have been able to comply with requirements under the Incorporated Associations Act (1985) that it holds a current central register of all members. Our current membership is 626.



### **Australian Charities and Not for Profit Commission (ACNC) Compliance**

The Annual Information Statement (AIS) is an annual obligation for every ACNC registered charity. The AIS includes questions about each charity, its activities, and basic financial information. This year the AIS was completed and submitted ensuring that Friends continues to meet all the required reporting obligations.

As the Friends are registered with the ACNC and are also collecting for charitable purposes in South Australia we are now taken to hold a Section 6 Collections for Charitable Purposes Licence (CCP2866). As a result, a physical licence will no longer be issued to Friends. These licence details appear on the Consumer and Business Services website

[www.cbs.sa.gov.au](http://www.cbs.sa.gov.au).

### **Deductible Gift Recipient (DGR) Status Endorsement**

The Friends were pleased to receive the DGR status endorsement from the Australian Taxation Office during the year. The endorsement enables Friends to receive gifts which are tax deductible to donors. The details can be viewed at [www.abr.business.gov.au](http://www.abr.business.gov.au).

### **Facilitating External Donations**

This year the Friends were able to facilitate a variety of external donations which were targeted towards specific items or areas within the hospital by the donors. These included

- » The Adelaide Dickens Fellowship Society donation of \$500 which allowed for the purchase of books for the Adolescent ward at the WCH
- » Jordon Pring donation of \$1100 purchased a fold away Sofa Bed for the Women's and Babies Division Delivery Suite
- » Settlers Farm OHSC donation of \$1251.75 purchased toys and a sign for Rose Ward
- » Matt Ellis donation of \$1067 which allowed for the purchase of toys for Newland Ward
- » Atze family donation of \$1800 purchased a new recliner chair and play gyms for Rose Ward.

Thank you to all our donors for selecting Friends as their charity of choice.

### **The Friends of WCH Person and Family Centred Care Passion Projects**

The Passion Projects initiative was launched last year and provides up to \$5000 to four projects annually that addresses an identified gap in Person and Family Centered Care.

Passion Projects need to be solution-focused quality improvement initiatives that involve Consumer Representatives in the design and implementation phase in partnership with the WCHN Consumer and Community Engagement Unit.

Passion Projects are independent initiatives that all WCHN Divisions can apply for and need to be completed in a 6 month period.

The 4 projects selected by the panel have now been finalized. The projects were delivered using the \$20,000 donated by Friends.

The projects included:

#### **Child and Adolescent Mental Health Services**

CAMHS purchased equipment for their Elizabeth team that covers a population of 250 000. The equipment is in the form of iPad's with a specifically designed APP which is used to gather critical information about children's and young people's experience of mental illness, through self-questionnaires. The APP provides information, assessment and instant feedback allowing clinicians to tailor interventions in partnership with the consumer. This will be accessible and inclusive of all family members – with 2 iPads available at each site, young people and their parents/carers can complete the questionnaire at the same time.

An unexpected element of the purchase of the iPad's has been the adoption of mindfulness applications that are used widely in the waiting rooms, by children and young people.

#### **Child and Family Health Services – Country South (Riverland)**

CaFHS project involved consumers in adapting and evaluating a What Were We Thinking (WWWT) pilot program to meet the needs of new parents living in Berri and surrounding areas.

The program supports young families, including those from the Aboriginal Community to have



increased confidence and competence in infant care. The WWWT program addresses challenges experienced by all couples, managing these effectively will contribute to improved family relationships and the wellbeing of each family member. The program has also been designed to promote good mental health, including parental competence and confidence, and to prevent rather than treat mental health problems. It is designed to specifically include fathers/partners. If the pilot is successful the program will be delivered as a prelude to the Early Parenting Groups which are only run when the number of clients is sufficient which often limits the ability for fathers to attend. The program has now been purchased and rolled out in the Riverland Berri Office of Child and Family Health Services. Funds were also used to purchase fridge magnets to be added to all Blue Books issued to mums who give birth at the hospital and live in the Riverland area. The magnets replicate the useful contact information which is on the back of the book which is quite often not around when required in an emergency. Training aids and an APP (WWWT) was also developed and made available to new mums.

### Women's And Babies Services

WABS developed a collection of birthing stories of 12 mothers and babies through music and art. The stories will capture consumers experiences and help to identify existing examples of good practice within WCHN and any opportunities for future improvement regarding the care of women, babies and their families at this service.

Birthing Stories is a collaborative project created by Tessa Kowaliw, consumer advocate and educator, and Heather Frahn, songwriter, sound therapist and performer. At its heart lies the birth stories of 12 WCHN mothers. Through a variety of creative activities, Tessa and Heather worked with participants to create a variety of written and spoken word, musical and visual art-based pieces which document individual experiences. These were collated to form:

- » A custom-composed Birthing Stories 'Song for Relaxation'
- » A Birthing Stories Vox Pop podcast; and
- » A Birthing Stories Poetry + Art exhibition.

The resulting collection will premiere at an official opening of the Birthing Stories exhibition in August 2017.



### Surgical Services

Surgical Services in consultation with 115 young people; from 3 primary schools (North Adelaide Primary School, East Para Primary School and St. Joseph's Payneham Primary School) co-designed a 5 minute cartoon video (My Trip to Hospital) which is designed to reduce anxiety faced by children coming in for day, overnight or complex surgery. The full day consultation enabled the staff from Surgical Services to learn how best to design a video that kids would actually want to sit and watch.

Each year the WCHN completes more than 10,000 procedures through theatres. The majority of children have limited experience of hospitals or with illness so the suite of videos will provide them with information and a virtual experience to reduce the anxiety and answer questions about going to hospital. The on line resources will facilitate and support the children to discuss the admission at home and will enhance the current admission process, commencing the pre-operative preparation of children before coming to hospital. It is hoped this will encourage the child to ask questions and promote discussion with their carer.

The introduction of the Passion Projects was trialled for one year then reviewed by the WCHN and The Friends Council, before approval was given for the projects to be funded by Friends for next year. The projects, particularly those in rural areas further demonstrate the support the Friends, via the WCHN provide to the whole of South Australia. These projects also increase community awareness about Friends, increase revenue and assist with the acquisition of new members, particularly in regional areas.





## Regional Conference Attendance

I was extremely pleased to attend the Region 1, 4, 5, 6 and 11 Conferences this year. It is always very satisfying to meet our hard working members throughout the state.

I found it very rewarding to see firsthand the outstanding work done for the hospital by our members. I look forward to attending more Regional Conferences in the year ahead.



Members of Region 4 Auxiliaries Division enjoy the 2016/17 Annual Conference.



Attending members, Friends President and Business Manager at the Region 5 Auxiliaries Division Annual Conference.

## H.U.G (Helping You Give) Initiative

The WCHN Consumer Feedback and Improvement Group (CFIG) in August 2016 recommended a verdict to develop an initiative to promote the Person and Family Centered Care Charter pillar 4, the promotion of positivity and kindness. The initiative also leverages from a media story earlier in August 2016 where a consumer left a random \$10 note at the WCH car park for another consumer, to brighten their day.

Jury members decided that the WCHN in

partnership with the Friends develop a “giving back” voucher system over the Christmas and New Year period. It was inspired by the goal of creating a community spirit within the Network and by the random acts of kindness movement.

Three different vouchers would be issued that included

1. \$5 Coffee Voucher, redeemable at the WCH Level 2 Café or Nic Nac Café
2. \$10 Gift Voucher, redeemable at the Friends Rainbows or Vic's Volunteer Shops.





3. \$15 Meal Voucher, redeemable at the WCH Level 2 Café or Nic Nac Café

A total of 436 H.U.G vouchers were distributed to long-stay and intensive care wards of the WCH and provided to families in hardship or emotional need from the 21st November 2016 – 31st March 2017.

The HUG initiative was launched at Aussie Loans Torrensville and was only possible thanks to the generous donations from local Adelaide Business which included

- » Aussie Torrensville
- » Judith Jordon, Family and Collaborative Lawyer
- » Comley legal
- » Lanser Communities
- » Zink Unley
- » Ouwens Casserly Real Estate
- » Cornerstone Conveyancing
- » LRM Construction
- » Anne Kirtland

The Friends would like to acknowledge and express thanks to all the generous sponsors as well as the WCHN consumers, Tanya, Lil, Judith, Vikki and Sarah for making this possible.

As quoted by the WCHN CEO Adjunct Associate Professor Naomi Dwyer “An act of kindness, no matter how small, makes a positive difference”.



## Goals for the Year Ahead

- » Continue to develop the Divisional Rules for all Friends Divisions.
- » Increase the profile of Friends
- » Become a Charity of Choice for more South Australians

- » Continue to develop strong mutually beneficial partnerships with South Australian business
- » Raise sufficient funds to support the purchase of a Positive Model Carver to complement the new Orthotics System

I would like to take this opportunity to thank Pauline Linke Friends President, for her support and commitment to Friends. Pauline is an incredible representative for Friends and performs her role in a proficient and committed manner.

I would also like to thank my colleagues from the Friends office Sonia Davies and Eva Kalmar for their assistance, professionalism and dedication to the Friends.

Thank you to Mr Phil Robinson, Executive Director of Corporate Services WCHN and Mr Allan Ball, Director of the Consumer and Community Engagement Division WCHN for their leadership and direction. I would also like to thank the hospital departments that support the work of Friends, in particular a special thank you to the Digital Media and Catering Departments.

I would like to finish my report by thanking all the incredible members throughout the state for their un-wavering support they provide to the Friends. Thank you also to those members that accept nominations for office bearing positions within your groups. The Divisional Management Committees, and the Friends Council for their exceptional dedication. From the many hours they allocate to their Division, to the amount of kilometres travelled for Friends business each year.

Congratulations to the Shops Auxiliary Division who celebrate 90 years of service to the hospital and have raised the staggering amount of over \$10 million dollars since 1927.

I am confident that Friends will continue to develop and grow whilst placing ourselves in a stronger position to attract and retain new members. I continue to look forward to the future of Friends and I am excited about the opportunities that present for our remarkable organisation.

**Andrew Wade**  
*Business Manager*

## Auxiliaries Division



*Nadine Olafsen State  
President, Auxiliaries  
Division*

### **State President's Report 2017**

It is with great pleasure that I present my report for 2016/2017.

The year has gone very smoothly, largely because of the support given by Sonia Davies, Eva Kalmar and Andrew Wade, The

Friends of WCH (Friends) Business Manager. Andrew has travelled with me to many of our Regional Conferences. He wants to be familiar with the Auxiliaries in country areas as well as the city. Conferences have been held at the Women's and Children's Hospital Region 1, Tarlee Region 4, Pt Lincoln Region 11, Tintinara Region 5, Glossop Region 6, Clare Region 10, this included Region 8, Kadina Region 12. All these meetings have shown that the interest in working for the Hospital is ongoing although some are having difficulty recruiting young members.

A number of Auxiliaries have purchased banners, sometimes shared with other Auxiliaries to help advertise fund-raising events. These are fairly large and therefore eye-catching – a good investment I would think. I would like to congratulate all those who have received Life Memberships and Service Bars in the last 12 months. Their efforts have been duly noted.

In the last 12 months the Auxiliaries Division generated a total income of \$184,056.00. This is an outstanding achievement and one you should all feel very proud of. The Auxiliaries Division as a result contributed \$123,000 to the Friends fundraising campaign for the 2016/17 financial year. The amount of \$140,000 was also dispensed this financial year but was from funds raised during the 2015/16 year. Therefore the amount of \$263,000 shows on the Audited financial report as being transferred by the division to the Friends operating account.

Please refer to the New Acquisition section of the report to see how these funds were dispensed to the hospital.

This year a major project has been adopted to purchase an Orthotics Machine. Up until now the process of producing an orthotic has been messy and long winded, taking up to 2 weeks for country patients who have to come back and forth. This new machine will only require about 2 hours and will allow for records to be kept for comparison in the future. Should future money be allocated, it will also allow the machine to do other work for the Orthotics Department.

The Friends website is really settling in. It has resulted in a number of donations from otherwise unsolicited sources. We've also found a few new members and shop volunteers who are really welcome.

All auxiliaries group have now been provided with the Friends receipt books which allow for the groups to issue receipts to any donors that request one for tax purposes when making a donation of over \$2.

This year the Auxiliaries Division were pleased to facilitate an external donation of \$1800 which was raised by the Atze family in partnership with the Pinnaroo Auxiliaries. The funds were raised specially for Rose Ward by the Atze family who held an open garden party with the assistance of the Pinnaroo members. The funds raised from the party allowed for the purchase of a recliner chair and play gym for the ward with a total value of \$1,744.

Our condolences go to those members who lost family members or friends this year. We would like to acknowledge the passing of Mrs Dianne Chivell of Balaklava, Region 4 Chairperson who passed away suddenly in May.

Financially our Auxiliaries have done very well again this year. This is all due to the enthusiasm and commitment of you, our members. Thank you very much for your efforts and we look forward to your continued support in 2017/2018.

### **Nadine Olafsen**

*State President, Auxiliaries Division  
Friends of the Women's and Children's  
Hospital Inc.*

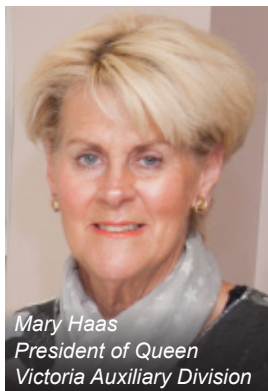


## Summary of Funds Raised by Each Auxiliary Group (Auxiliary Division) for 2016–17

Ardrossan (deposited July 2017)	\$	400
Auburn / Watervale	\$	2,000
Balaklava & District	\$	4,000
Berri & District	\$	2,923.10
Blackwood / Belair	\$	4565
Bordertown & District	\$	2,460
Ceduna & District	\$	3,500
Clare	\$	14,400
Cleve & District	\$	2,300
Crystal Brook & District	\$	7,000
Cudlee Creek / Kersbrook	\$	6,237.15
Greenock	\$	850
Kadina	\$	7,000
Lameroo & District (deposited July 2017)	\$	2500
Lock & District	\$	1,600
Lucindale	\$	2,000
Maitland / Arthurton	\$	2,585
Meningie & District	\$	6,500
Moonta & District	\$	3,700
Pinnaroo & District	\$	1,142
Port Adelaide	\$	10,000
Port Lincoln	\$	4,500
Renmark & District	\$	2,700
Tarlee / Stockport	\$	579.70
Tintinara	\$	5,000
Tumby Bay	\$	20,000
Victor Harbor / Goolwa	\$	2,396
Wallaroo	\$	6065.95
Warooka & District	\$	1,500
Yorke town & District	\$	3,890
<b>GRAND TOTAL</b>	<b>\$</b>	<b>134,293.90</b>



## Queen Victoria Auxiliary Division



Mary Haas  
President of Queen  
Victoria Auxiliary Division

### President's Report

In presenting this report, I feel both proud and privileged to represent a committee of members who give so generously (from wherever their strengths lie), to support a cause about which we are all very passionate.

Collectively, we have donated \$32,877 to the Women's and Babies Division of the Women's and Children's Hospital, for the approved purchase of a Resuscitation Cot, a Full Birthing Trainer Model, "Sophie", plus covering the freight expense for a donated Sofa Bed.

Our fundraising highlight for the year would have to have been the Fashion Night held at Mercedes Benz Adelaide. This event was truly an extravaganza, so ably coordinated by Anne Bilyk, a night to be remembered.

Other events included support at an Open Garden in November 2016, a Film Night held in February 2017 which seated a sell-out crowd to view the movie, Hidden Figures. This was a sensational success along with the annual Bridge Day held in May, 2017. Guests and players are always treated to the amazing sandwiches and slices, lovingly prepared by members. Their catering skills are second to none, thank you ladies and their family members who are always willingly co-opted to assist in any area.

Whilst the members can take a good deal of credit for such a profitable fundraising year, we could not have achieved this result without the support of sponsors, too numerous to mention, however in particular we feel blessed to have the ongoing support of Angove Family Winemakers and Mercedes Benz Adelaide. People of South Australia are so generous.

Slowly, I'm sure we are reaping the benefits of the advent of the Friends website along with the use of Eventbrite booking facility and advertising future fundraising events in "Around our Region." The latter alerts staff from the Health Network, many of whom have kindly supported our events.

I would like to congratulate Friends office staff, namely Andrew Wade who is ably assisted by Sonia Davies and Eva Kalmar. The introduction of the above processes along with seeing through the access of the Deductible Gift Recipient status, effective as of October 3rd, 2016, have added an extra workload, however they remain ever patient and at the ready with our many requests.

Our success is always celebrated at our annual Christmas get together held in November before our summer recess. At our last celebration we welcomed to our throng, a much more youthful member, Belinda who came to us via the website. Belinda has been able to offer assistance to office staff at busier times. We would gladly welcome any other prospective members.

On a sadder note we do acknowledge the passing of Liz Agnew. Liz was a valued member for more than 20 years. We remember her as a "pocket rocket" behind the scenes in the kitchen at any time.

It can't go without mention that I am so grateful for the unwavering support of our secretary, Heather Wheatley, Treasurer Judy Burchard and Vice President Kerin Haslam. In all, thank you.

**Mary Haas**  
*President, Queen Victoria Auxiliary  
Division Friends of the Women's and  
Children's Hospital Inc.*





## Shops Auxiliary Division



Margaret Markham  
President, Shops  
Auxiliary Division

### President's Report

This has been a momentous year in the history of the Shops at the Hospital as the first shop/kiosk, known as the Red-Cross Buffet, at the then Adelaide Children's Hospital which began operating in 1927. It was opened by a team of doctor's wives who joined together to provide food and refreshments for outpatients and visitors to the Hospital. The profit for that first year was just 1 pound!!! 90 years later, the shops, Rainbows and Vics, which joined us at the present site on the 8th May 1995 when the Queen Victoria Hospital was closed and the current hospital was re-badged as the Women's and Children's Hospital are still operating. What an achievement!! 90 years of service to the Hospital and its community and over \$10,000,000 raised in that time to benefit the Hospital and its clients. We will celebrate this amazing contribution to the welfare of the children of SA with a special lunch to which we have invited many of our past Life Members.

Once again, the start to the trading year after Christmas has been slow but there has been an upturn in figures during the year. Despite the slow start, the Shops have been able, once again, to make a significant contribution to the Friends of WCH Inc., of \$380,000 over this financial year. This result takes many, many hours of dedicated effort from our team of volunteers. Presently we have 130 volunteers. The Shops are open from 8.30am until 4.30pm daily and Rainbows on the weekend as well so there are many hours of volunteer time required to keep the Shops operating. Rosters are a frequent headache due to illness and absenteeism but somehow we battle through. Thanks to Bev Graham and Di McCrae who are in charge of the rosters for their efforts in both shops to ensure there are sufficient volunteers to staff for each shift/day. Bev and Di are well known and respected for this often thankless task. Our Team Leaders also deserve a mention for their commitment to their roles. Due to an

unprecedented degree of absenteeism amongst this group, there has been some remarkable contributions from some key personnel during the first 6 months of 2017. A big thankyou to all our Team Leaders – Di McCrae, Hetty Gardenier, Bev Graham, Kath Coupe, Sandy Jolly, Thea Milner, Margaret Markham, Dorothy Sandland, Jodie Hoffman, Karen Wadwell, Lorraine Hoile, Daphne Moosha, Penny Kears and Nathalie Rouelle and also to the many volunteers who have so graciously accepted extra shifts. Special recognition needs to be made of the weekend staff in Rainbows who so willingly give up their time to keep the Shop open on Saturday and Sunday. The Shops could not continue to operate without the support of all of the above.

Major contributions are made by many others too. The finances of the Shops are managed by our Treasurer, Jenny Brown and her assistant, Judith Richards. They pay the bills, manage the budget and the investments of this large business with great professionalism. Thank you!

Our hard-working Committee meets regularly to discuss and debate issues surrounding the everyday operations and a vision for the future. It is this group that decides on the major issues facing the Shops and how the funds raised will be distributed. Two members of this Committee, Margaret Markham and Dorothy Sandland represent the Shops on the Friends Council. Thank you to all members who participate in the decision-making process. We appreciate your efforts in ensuring that our hard-earned dollars are well spent.

Andrew, Sonia and Eva have given great service to all the Friends fundraising groups but especially to the Shops Auxiliary. Andrew has a great capacity to manage and appreciate the efforts and abilities of all our volunteers and is always willing to help out in the Shops when required. His cheerfulness and acknowledgement of the efforts of the volunteers is much appreciated by them. Sonia is also happy and willing to offer support when it is needed and we all feel sad that Eva, with her cheery nature and big smile, is leaving us. We wish her well and thank all of the administrative team for their support during the year.



The staff of the hospital supports us in many ways. Some of them are regular patrons of the Shops and we thank them for that. The Spotless staff support us in many ways by making sure the Shops are cleaned overnight for use the next day. They also take care of some early morning deliveries and the security staff are always on hand to take care of issues which are of that nature. Thank you to you all.

The recruitment of new volunteers is crucial to the on-going viability of the Shops. Andrew plays a huge role in this and the initial training of new volunteers. As the training and recruitment of volunteers is an expensive and time consuming process, we feel we need to make sure that new volunteers understand what their role might look like within the Shops so we have instigated a trial shift in the Shops as part of their training to ascertain which roles would suit each volunteer. We hope this will lead to better outcomes for both the Shops and the volunteers. Through the year we have welcomed many new volunteers and we hope they enjoy their time with us. It is a rewarding experience with the chance to join a wide and diverse group of people with a similar goal – to give their time to a very worthwhile cause. At the same time we have farewelled and thanked many of our former colleagues who have retired after giving wonderful service over many years.

Congratulations to all the recipients of Service Awards this year. We acknowledge the contributions of you all but particularly congratulate those who will be presented with Life Membership which means you have given 15 years of great service to this organization and you are to be commended for that.

As the Shops move on towards a Centenary celebration in 2027, it is with pleasure that we say it has been a wonderful journey and a privilege to be part of a group of people who have given so much towards the betterment of the children of SA.

**Margaret Markham**  
*President, Shops Auxiliary Division  
 Friends of the Women's and Children's  
 Hospital Inc.*



*Members of the Shops Auxiliary Division enjoy the 2016 Christmas Dinner kindly provided by the hospital*



*Margaret Markham Shops Auxiliaries President presents the second contribution of \$200,000 from the Shop Division to the Friends President Pauline Linke*



*Pauline Linke, Friends President recognises and thanks Bev Graham for her hard work, dedication and support to the Friends.*



*Father Christmas and Margaret present a raffle prize to shops volunteer Jo at the Shops dinner.*

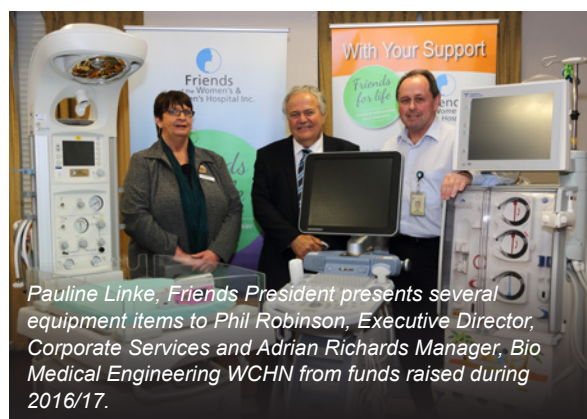


# New Acquisitions by the Women's & Children's Hospital

Donations from The Friends of WCH Inc. have been directed towards the following:

## Auxiliaries Division and the Shops Auxiliary Division

Department	Equipment Description	Unit Price
Various CaFHS sites around South Australia	Screening Audiometers x 23	\$40,000
Hospital in the Home Program	Infusion Pumps x 6	\$18,000
Urology Department	Urodynamics System	\$50,000
Renal Unit	Haemodialysis Machine	\$30,000
Delivery Suit	Ultrasound Scanner x 2	\$70,000
Orthotics Department (funds allocated from this financial but will be distributed during 2017/18 financial year)	Orthotics System	\$100,000



## Queen Victoria Auxiliary Division

Department	Equipment Description	Unit Price
Neo Natal	Resuscitation Cot	\$25,000
Delivery Suit	Sophie Trainer	\$7682.32
Delivery Suit	Freight for Fold Away Bed	\$195

## External Donations

Donor	Department	Equipment Description	Donation Amount
Adelaide Dickens Fellowship Society	Adolescent Ward	Books	\$500
Jordon Ping	Delivery Suit	Fold Away Bed	\$1100
Settlers farm OHSC	Rose Ward	Toys and Sign	\$1251.75
Matt Ellis	Newland Ward	Toys and Craft Table	\$1067
Atze Family	Rose Ward	Recliner Chair	\$1800



# Recognition of Donations

## Friends Donations Received 2016/17

Donated By	Amount	Description
<b>DONATION FOR H.U.G INTITATIVE</b>		
Anne Kirtland	\$50.00	HUG
Annette Cromley	\$500.00	HUG
Aussie Home Loans	\$1,000.00	HUG
Damien Wills Ouwens Casserly	\$300.00	HUG
Joe Controneo Zink	\$500.00	HUG
Judith Jordan	\$1,000.00	HUG
Lanser Communities	\$500.00	HUG
LRM Construction / Michael	\$250.00	HUG
Nicole Rajan	\$300.00	HUG
<b>TOTAL</b>	<b>\$4,400.00</b>	
<b>GENERAL DONATIONS</b>		
Adrian Richards	\$10.00	General
Alison Bell	\$20.00	General
Andrew Wade	\$10.00	General
Caddie Pringle	\$850.00	General
Chris Burrows	\$200.00	General
Emily Teo	\$100.00	General
Emmalee Atze	\$100.00	General
Heather Konzag	\$100.00	General
Ian Frost	\$50.00	General
Jenny Bruce	\$25.00	General
Joan Hussey	\$30.00	General
Karen Luong	\$500.00	General
Katie Crooker	\$200.00	General
Lisa Lemon	\$100.00	General
Loren Morley	\$50.00	General
Melissa Cadzow	\$1,000.00	General
Michael Siddall	\$50.00	General
Michele O'Byrne	\$350.00	General
Rick Bennett	\$25.00	General
Sally Thiele	\$100.00	General
Sandra Harrington	\$10.00	General/Monthly
Stephen Winter	\$100.00	General
Teresa Mahoney	\$50.00	General
<b>TOTAL</b>	<b>\$4,030.00</b>	





<b>BEQUEST DONATIONS</b>		
Billy Graham, Shops Division	\$325.00	Bequest
Billy Graham, Shops Division	\$50.00	Bequest
Letty Bunnett, Crystal Brook Auxiliary	\$100.00	Bequest
Nellie Mc Guire, Kersbrook Auxiliary	\$235.00	Bequest
Una Haywood, Yorketown Auxiliary	\$100.00	Bequest
<b>TOTAL</b>	<b>\$810.00</b>	
<b>SPECIFIC DONATIONS FOR SELECTED ITEMS</b>		
Adelaide Dickens Fellowship Society	\$500.00	Books Adolescent Ward
Atze Family	\$1,800.00	Recliner Chair Rose Ward
Jordon Pring	\$1,100.00	Sofa Bed Delivery Suit
Matt Ellis	\$1,067.00	Toys Newland Ward
Settlers Farm OSHC	\$1,251.75	Toys Rose Ward
<b>TOTAL</b>	<b>\$5,718.75</b>	
<b>CORPORATE DONATIONS</b>		
Nyrstar Port Pirie / Damien	\$500.00	General
<b>TOTAL</b>	<b>\$500.00</b>	
<b>SPONSORSHIP DONATIONS</b>		
Radiometer Pacific	\$1,500.00	Website Launch
Radiometer Pacific	\$500.00	2016 Friends Conference
Sonosite Australasia	\$1,080.00	Website Launch
<b>TOTAL</b>	<b>\$3,080.00</b>	
<b>TOTAL AMOUNT RECEIVED FOR 2016/17</b>		<b>\$18,538.75</b>



The Friends were pleased to facilitate a donation from the Adelaide Dickens Fellowship Society of \$500. The money was used to purchase new books for Adolescent Ward at the WCH. Andrew, Friends Business Manager and Kim, Play Therapist presents the books to Gabriele, Adrian and Thomas.



The Atze family with the support of the Pinnaroo Auxiliaries Division purchased a new recliner chair for Rose Ward at the cost of \$1544. Judith presents the chair to the Rose ward team. An additional \$200 was also raised and purchased play gyms for the ward.

# Recognition of Service

## Life Membership 2016

Life Membership is awarded to members who have provided outstanding service to the association. The Council will ratify the appointment of Life Members annually on the recommendation of any of the Divisions. The appointment of Life Membership is not automatic but is made for outstanding service by active members with 15 years or more active service. Consideration may also be given to the award of a Life Membership for exceptional service to a person who has less than 15 years. **Congratulations to the recipients of Life Membership awarded in 2016 to:**

Helen Cook	Auxiliaries – Ardrossan
Margaret Williamson	Auxiliaries – Port Adelaide
Gaynor Goold	Auxiliaries – Port Adelaide
Kayleen Mitchell	Auxiliaries – Port Lincoln
Denise Maddern	Auxiliaries – Port Lincoln
Mary Daniel	Auxiliaries – Yorktown
Joy Darby	Auxiliaries – Yorktown
Sandy McCormack	Shops Auxiliary Division
Beth Greer	Shops Auxiliary Division
Anne Floyd	Shops Auxiliary Division
Margaret Markham	Shops Auxiliary Division
Dorothy Sandland	Shops Auxiliary Division



*Friends Life member recipients 2016 from left to right Joy Darby, Mary Daniell, Dorothy Sandland, Margaret Williamson, Gaynor Goold, Beth Greer, Helen Cook, Ann Floyd and Margaret Markham.*



**Friends Life Member recipients 2016**



## Recognition of Service

Congratulations to the following members for achieving significant milestones in providing service to support the Women's and Children's Hospital, presented in October 2016.

### Year Ending June 2016 Recipients

#### 100 Hours service

Jeff Anderson	Shops Auxiliary Division
Shirley Gibson	Shops Auxiliary Division
Sean Hutchinson	Shops Auxiliary Division
Tim Leeder	Shops Auxiliary Division
Ashleigh McGregor	Shops Auxiliary Division
Palak Palak	Shops Auxiliary Division
James Pedrocchi	Shops Auxiliary Division
Hanna Zarna	Shops Auxiliary Division

#### 500 Hours service

Karen Wadwell	Shops Auxiliary Division
Mark Russell	Shops Auxiliary Division
Anju Melwani	Shops Auxiliary Division
Susan Connell	Shops Auxiliary Division

#### 1,000 Hours service

Hetty Gardenier	Shops Auxiliary Division
Julie Mc Millan	Shops Auxiliary Division
Chloe Phillips	Shops Auxiliary Division





Congratulations to the following members for achieving significant milestones in providing service to support the Women's and Children's Hospital.

## Year Ending June 2016 Recipients

5 years	
Jean Holmes	Auxiliaries Division – Greenock
Belinda Anderson	Auxiliaries Division – Greenock
Paula Menzel	Auxiliaries Division – Greenock
Alexis Klaebe	Auxiliaries Division – Lameroo
Kat Philbey	Auxiliaries Division – Lameroo
Kate Venning	Auxiliaries Division – Lameroo
Pam Walker	Auxiliaries Division – Port Adelaide
Raylene Peter	Auxiliaries Division – Wallaroo
Lola Haylock	Auxiliaries Division – Wallaroo
Christine Murdock	Auxiliaries Division – Wallaroo
Tracey Shields	Auxiliaries Division – Wallaroo
Amanda Shields	Auxiliaries Division – Wallaroo
Charmayne Bornholm	Auxiliaries Division – Warooka
Lynn Cooney	Auxiliaries Division – Yorktown
Elain Dixon	Shops Auxiliary Division
Robert Fotheringham	Shops Auxiliary Division
Sue Fotheringham	Shops Auxiliary Division
Christine Gangnuss	Shops Auxiliary Division
Denise Skinner	Shops Auxiliary Division
10 years	
Marg Dalos	Auxiliaries Division – Ardrossan
Sue Sleep	Auxiliaries Division – Ceduna & District
Susie Skinner	Auxiliaries Division – Clare
Joy Crosby	Auxiliaries Division – Cleve
Sue Burton	Auxiliaries Division – Greenock
Jill Kaelser	Auxiliaries Division – Cuddle Creek/Kersbrook
Tracey Sarunic	Auxiliaries Division – Port Lincoln
Kristin McEvoy	Auxiliaries Division – Warooka
David Shields	Shops Auxiliary Division
Helen Gummow	Shops Auxiliary Division
Sandra Jolly	Shops Auxiliary Division



**15 years**

Pippin Wooldridge	Auxiliaries Division – Ardrossan
Melva Freeman	Auxiliaries Division – Ceduna & District
Jan Henningsen	Auxiliaries Division – Port Adelaide
Margaret Williamson	Auxiliaries Division – Port Adelaide
Kristen Griffiths	Auxiliaries Division – Saddleworth
Ann Elliot	Shops Auxiliary Division
Ann Floyd	Shops Auxiliary Division + Life Membership
Margaret Markham	Shops Auxiliary Division + Life Membership
Dorothy Sandland	Shops Auxiliary Division + Life Membership
Beth Greer	Shops Auxiliary Division + Life Membership
Sandy McCormack	Shops Auxiliary Division + Life Membership

**20 years**

Helen Cook	Auxiliaries Division – Ardrossan
Jean England	Auxiliaries Division – Ardrossan
Norm Davy	Auxiliaries Division – Ardrossan
Gaynor Goold	Auxiliaries Division – Port Adelaide
Chris Collins	Auxiliaries Division – Warooka
Louise Taheny	Auxiliaries Division – Warooka
Joanne Hayes	Auxiliaries Division – Warooka
Lee- Anne Murdoch	Auxiliaries Division – Warooka
Meg Burchell	Shops Auxiliary Division
Barbara Davey	Shops Auxiliary Division
Ahn Hagendom	Shops Auxiliary Division
Wendy Kurchel	Shops Auxiliary Division
Jenny Lo-Faro	Shops Auxiliary Division
Jill Lukes	Shops Auxiliary Division
Ruth Taylor	Shops Auxiliary Division
Shirley Morganti	Shops Auxiliary Division
Julie Warren	Shops Auxiliary Division



<b>25 years</b>	
Fay Davy	Auxiliaries Division – Ardrossan
Glenda Cooke	Auxiliaries Division – Ceduna & District
Jane Toogood	Auxiliaries Division – Lameroo
Annabel Murdoch	Auxiliaries Division – Warooka
<b>30 years</b>	
Kayleen Mitchell	Auxiliaries Division – Port Lincoln
<b>35 years</b>	
Jenny Brown	Auxiliaries Division – Ardrossan
Sharon Freer	Meningie & District – Ardrossan
Angela Provis	Auxiliaries Division – Ceduna & District
Lorraine Darling	Auxiliaries Division – Moonta & District
Valda Hocking	Auxiliaries Division – Moonta & District
Barb Germein	Auxiliaries Division – Saddleworth
Marjory Jackson	Auxiliaries Division – Wallaroo
Patricia Barry	Shops Auxiliary Division
<b>40 years</b>	
Kye Langmead	Auxiliaries Division – Port Lincoln
Judith Gardner	Auxiliaries Division – Renmark
<b>45 years</b>	
Barb Lamkin	Auxiliaries Division – Auburn/ Watervale
Jill Behn	Auxiliaries Division – Saddleworth
<b>50 years</b>	
Leonora Huddleston	Auxiliaries Division – Lameroo
Joan Hussey	Auxiliaries Division – Port Adelaide
<b>55 years</b>	
Alison Sullivan	Auxiliaries Division – Wallaroo



# Auditors Financial Report

**FRIENDS OF THE WOMEN'S & CHILDREN'S HOSPITAL INC.**

**FINANCIAL REPORT**

**FOR THE FINANCIAL YEAR ENDED  
30 JUNE 2017**



**FRIEND'S OF THE WOMEN'S & CHILDREN'S HOSPITAL INC**

**FINANCIAL REPORT  
FOR THE FINANCIAL YEAR ENDED 30 JUNE 2017**

**CONTENTS**

	Page
Report of the Committee & Statement by Officers of the Coordinating Council	3
Statement of Comprehensive Income	4
Statement of Financial Position	6
Cash Flow Statement	7
Notes to the Financial Report	8
Individual Statement of Income and Expenditure Friends Office	10
Individual Statement of Income and Expenditure Shops Division	11
Individual Statement of Income and Expenditure Auxiliaries Division	12
Individual Statement of Income and Expenditure QV Division	13
Auditors Report	14



## REPORT OF THE COMMITTEE

The Committee of Management reports that:

- (a) During the financial year ended 30 June 2017, no officer of the Association, firm of which the officer is a member, or body corporate in which the officer has a substantial financial interest, has received or become entitled to receive a benefit as a result of a contract between the officer, firm or body corporate and the Association; and
- (b) no officer of the Association has received directly or indirectly from the Association any payment or other benefit of a pecuniary value, except for the reimbursement of expenses incurred on behalf of the Association.

## STATEMENT BY OFFICERS OF THE ASSOCIATION

The Officers of the Association have determined that the Association is not a reporting entity and that this special purpose financial report should be prepared in accordance with the accounting policies outlined in Note 1 to the financial report.

The Officers of the Association declare that in the Officers' opinion:

- (a) The accompanying financial report has been drawn up so as to present fairly the results of operations of The Friends of the Women's & Children's Hospital Inc. for the financial year ended 30 June 2017 and that the financial statements and notes satisfy the requirements of the *Australian Charities and Not-for-profits Commission Act 2012*; and
- (b) As at the date of this statement there are reasonable grounds to believe that the Friend's of the Women's & Children's Hospital Inc. will be able to pay all of its debts, as and when they

Signed in accordance with subsection 60.15(2) of the *Australian Charities and Not-for-profit Commission Regulation 2013* and in accordance with a resolution of the Committee of Management, on its behalf by: -

Pauline Linke, President



6th September 2017





**FRIENDS OF THE WOMEN'S & CHILDREN'S HOSPITAL INC**  
**STATEMENT OF COMPREHENSIVE INCOME**  
**FOR THE FINANCIAL YEAR ENDED 30 JUNE 2017**

	2017	2016
	\$	\$
<b>INCOME</b>		
Shop Sales	1,008,699	1,063,208
Interest	11,573	13,528
Donations	38,964	17,030
Affiliate Fees	570	12,097
Merchandise	719	4,465
Minor Raffles	9,793	29,072
Sundries	1,131	3,294
Special Fundraising	201,767	197,368
Total Income	<u>1,273,216</u>	<u>1,340,062</u>
<b>EXPENDITURE</b>		
Food	219,372	217,360
Drinks	157,740	175,843
Confectionery	57,277	65,884
Magazines & Newspapers	25,601	32,336
Flowers	14,736	17,004
Gifts, Toys, Cards	117,651	111,786
Clothing	7,447	15,827
Merchandise	2,012	3,446
Salaries & Wages	173,274	-
Goods & Services Expense	19,409	-
Overheads	30,654	29,747
Other Expenses	20,772	32,098
Special Fundraising Expenses	78,847	80,611
Audit & Accounting Fees	9,075	9,000
Total Expenditure	<u>933,867</u>	<u>790,942</u>
<b>OPERATING SURPLUS/(DEFICIT)</b>	<b><u>339,349</u></b>	<b><u>549,120</u></b>
<b>OTHER INCOME &amp; EXPENSE</b>		
Transfer to FWCH Operating Account	-	-
Donation to Women's & Children's Hospital	(257,155)	(220,000)
<b>Net Surplus/(Deficit)</b>	<b><u>82,194</u></b>	<b><u>329,120</u></b>

*The accompanying notes form part of this financial report*



**FRIEND'S OF THE WOMEN'S & CHILDREN'S HOSPITAL INC**  
**STATEMENT OF COMPREHENSIVE INCOME BY DIVISION**  
**FOR THE FINANCIAL YEAR ENDED 30 JUNE 2017**

	2017				
	\$				
	DIVISIONS				
	Friends of Women's & Children's Hospital Central Account	Shops	Auxiliaries	Queen Victoria	Friends of Women's & Children's Hospital TOTAL
<b>INCOME</b>					
Shop Sales	-	1,008,699	-	-	1,008,699
Interest	2,634	8,546	393	-	11,573
Donations	16,886	5,203	14,170	2,705	38,964
Affiliate Fees	-	-	570	-	570
Merchandise	176	-	488	55	719
Minor Raffles	-	-	9,793	-	9,793
Sundries	550	-	581	-	1,131
Special Fundraising	1,120	-	158,061	42,586	201,767
Total Income	21,366	1,022,448	184,056	45,346	1,273,216
<b>EXPENDITURE</b>					
Food	-	219,372	-	-	219,372
Drinks	-	157,740	-	-	157,740
Confectionery	-	57,277	-	-	57,277
Magazines & Newspapers	-	25,601	-	-	25,601
Flowers	-	14,736	-	-	14,736
Gifts, Toys, Cards	-	117,651	-	-	117,651
Clothing	-	7,447	-	-	7,447
Merchandise	1,793	-	219	-	2,012
Salaries & Wages	173,274	-	-	-	173,274
Goods & Services Expense	19,409	-	-	-	19,409
Overheads	3,165	27,489	-	-	30,654
Other Expenses	7,272	11,515	1,985	-	20,772
Special Fundraising Expenses	-	-	60,759	18,088	78,847
Audit & Accounting Fees	9,075	-	-	-	9,075
Total Expenditure	213,988	638,828	62,963	18,088	933,867
<b>OPERATING SURPLUS/(DEFICIT)</b>	<b>(192,622)</b>	<b>383,620</b>	<b>121,093</b>	<b>27,258</b>	<b>339,349</b>
<b>OTHER INCOME &amp; EXPENSE</b>					
Transfer to FWCH Operating Account	643,000	(380,000)	(263,000)	-	-
Donation to Women's & Children's Hospital	(222,534)	-	(1,744)	(32,877)	(257,155)
<b>Net Surplus/(Deficit)</b>	<b>227,844</b>	<b>3,620</b>	<b>(143,651)</b>	<b>(5,619)</b>	<b>82,194</b>

The accompanying notes form part of this financial report



**FRIEND'S OF THE WOMEN'S & CHILDREN'S HOSPITAL INC**  
**STATEMENT OF FINANCIAL POSITION**  
**AS AT 30 JUNE 2017**

	Note	2017 \$	2016 \$
<b>CURRENT ASSETS</b>			
Cash & Cash Equivalents	2	953,370	843,939
Other Receivables		7,499	3,470
Net GST Receivable		-	-
Other Current Assets & Prepayments		<u>2,641</u>	<u>2,341</u>
<b>TOTAL CURRENT ASSETS</b>		<u>963,510</u>	<u>849,750</u>
<b>TOTAL ASSETS</b>		<u>963,510</u>	<u>849,750</u>
<b>CURRENT LIABILITIES</b>			
Trade Creditors		21,111	19,035
Accrued Expenses		30,116	-
Net GST Payable		<u>8,023</u>	<u>8,649</u>
<b>TOTAL CURRENT LIABILITIES</b>		<u>59,250</u>	<u>27,684</u>
<b>TOTAL LIABILITIES</b>		<u>59,250</u>	<u>27,684</u>
<b>NET ASSETS</b>		<u>904,260</u>	<u>822,066</u>
<b>ACCUMULATED FUNDS</b>			
Opening Accumulated Funds	3	822,066	492,946
Prior Period Adjustment		-	-
Surplus/(Deficit) for the year		<u>82,194</u>	<u>329,120</u>
<b>TOTAL ACCUMULATED FUNDS</b>		<u>904,260</u>	<u>822,066</u>





**FRIEND'S OF THE WOMEN'S & CHILDREN'S HOSPITAL INC**  
**CASH FLOW STATEMENT**  
**FOR THE FINANCIAL YEAR ENDED 30 JUNE 2017**

	Note	2017 \$	2016 \$
<b>CASH FLOWS FROM OPERATING ACTIVITIES</b>			
Shop Receipts		1,008,699	1,063,208
Donations & Fundraising Activities		250,524	243,470
Other Income		2,420	19,856
Payments to Suppliers		<u>(1,163,785)</u>	<u>(1,007,643)</u>
<b>NET CASH FLOWS FROM OPERATING ACTIVITIES</b>	<b>3</b>	<b><u>97,858</u></b>	<b><u>318,891</u></b>
<b>CASH FLOWS FROM INVESTING ACTIVITIES</b>			
Interest Received		11,573	13,528
Payment for property, plant and equipment		-	-
Proceeds from sale of property, plant and equipment		<u>-</u>	<u>-</u>
<b>NET CASH FLOWS FROM INVESTING ACTIVITIES</b>		<b><u>11,573</u></b>	<b><u>13,528</u></b>
<b>NET INCREASE / (DECREASE) IN CASH HELD</b>		<b>109,431</b>	<b>332,419</b>
<b>CASH AT THE BEGINNING OF THE YEAR</b>		<b><u>843,939</u></b>	<b><u>511,520</u></b>
<b>CASH AT THE END OF THE YEAR</b>		<b><u>953,370</u></b>	<b><u>843,939</u></b>



**FRIEND'S OF THE WOMEN'S & CHILDREN'S HOSPITAL INC**

**NOTES TO THE FINANCIAL REPORT  
FOR THE FINANCIAL YEAR ENDED 30 JUNE 2017**

**1. STATEMENT OF SIGNIFICANT ACCOUNTING POLICIES**

In the opinion of the Officers of the Association, the Association is not a reporting entity. Accordingly, the report is a "Special Purpose Financial Report" that has been prepared solely to meet the requirements of the Associations Incorporations Act (SA) and the Australian Charities and Not-for-profits Commission Act 2012 and the Australian Charities and Not-for-profits Commission

The financial report covers the Friend's of the Women's and Children's Hospital Incorporated as an individual entity. The Friend's of the Women's and Children's Hospital Incorporated is an association of volunteers that support and fundraise for the hospital community. The principal place of business of the Friend's of the Women's and Children's Hospital is 72 King William Road,

The financial statement has been prepared in accordance with the following Accounting Standards and other mandatory professional reporting requirements:

<i>AASB 101</i>	<i>Presentation of Financial Statements</i>
<i>AASB 107</i>	<i>Statement of Cash Flows</i>
<i>AASB 108</i>	<i>Accounting Policies, Changes in Accounting Estimates and Errors</i>
<i>AASB 1048</i>	<i>Interpretation of Standards</i>
<i>AASB 1054</i>	<i>Australian Additional Disclosures</i>

No other applicable Accounting Standards, Urgent Issues Group Interpretations or other authoritative pronouncements of the Australian Accounting Standards Board have been applied. The following material accounting policies, which are consistent with the previous period unless otherwise stated, have been adopted in the preparation of this financial report.

**a) Income Tax**

The Association is exempt from income tax pursuant to the Income Tax Assessment Act.

**b) Cash and cash equivalents**

Cash and cash equivalents includes cash on hand, deposits held at call with banks and other short-term highly liquid investments with original maturities of three months or less.

**c) Goods and Services Tax (GST)**

The Association is registered for GST purposes, with a GST registration number 46 162 206 835.

For the Association all revenues, expenses and assets are recognised net of the amount of GST, except where the amount of GST incurred is not recoverable from the Australian Taxation Office. In these circumstances the GST is recognised as part of the cost of acquisition of the asset or as part of an item of the expense. Receivables and payables in the balance sheet are

	<b>2017</b>	<b>2016</b>
	\$	\$
<b>2. CASH &amp; CASH EQUIVALENTS</b>		
<b>Friends of Women's &amp; Children's - Central</b>		
Operating Accounts	438,727	3,340
Cash Management Account	28	211,680
	<u>438,755</u>	<u>215,020</u>



**FRIEND'S OF THE WOMEN'S & CHILDREN'S HOSPITAL INC**

**NOTES TO THE FINANCIAL STATEMENTS  
FOR THE FINANCIAL YEAR ENDED 30 JUNE 2017**

	<b>2017</b>	<b>2016</b>
<b>2. CASH &amp; CASH EQUIVALENTS (continued)</b>	<b>\$</b>	<b>\$</b>
<b>Shops</b>		
Shop - Floats	5,350	5,350
Shops - Undeposited Funds	-	2,803
Shops - ANZ Account	20,405	17,528
Shops - ANZ At Call Account	10,094	25,118
Shops - ANZ Term Deposit	355,000	340,000
	390,849	390,799
<b>Auxiliaries</b>		
Central Operating Account	57,597	155,097
Auxiliary Operating Bank Accounts	56,550	67,790
	114,147	222,887
<b>Queen Victoria</b>		
Operating Bank Account	9,619	15,233
	<b>953,370</b>	<b>843,939</b>

**3. CASH FLOW INFORMATION**

(a) Reconciliation of net cash provided by operating activities to operating result:

	<b>2017</b>	<b>2016</b>
	<b>\$</b>	<b>\$</b>
Operating Result	82,194	329,120
Non-cash flows in operating result:		
Depreciation	-	-
Net Profit/(Loss) on Sale of Assets	-	-
Interest Received	(11,573)	(13,528)
Changes in assets and liabilities:		
(Increase)/Decrease in Receivables	(4,029)	(2,337)
(Increase)/Decrease in Prepayments	(300)	18
Increase/(Decrease) in Payables	31,566	5,618
	97,858	318,891



**FRIEND'S OF THE WOMEN'S & CHILDREN'S HOSPITAL INC**

**STATEMENT OF INCOME AND EXPENDITURE  
for the Financial Year ended 30 June 2017  
CENTRAL ACCOUNTS**

	\$ 2017	\$ 2016
<b>INCOME</b>		
Interest	2,634	175
Donations	16,886	50
Merchandise	176	-
Other Income	1,670	-
Affiliate Fees	-	12,097
Total Income	<u>21,366</u>	<u>12,322</u>
<b>EXPENDITURE</b>		
Merchandise	1,793	1,748
Salaries & Wages	173,274	-
Goods & Services	19,409	-
Overheads	3,165	3,183
Other Expenses	7,272	13,419
Audit & Accounting Fees	9,075	9,000
Total Expenditure	<u>213,988</u>	<u>27,350</u>
<b>OPERATING SURPLUS/(DEFICIT)</b>	<u><b>(192,622)</b></u>	<u><b>(15,028)</b></u>
<b>OTHER INCOME &amp; EXPENSE</b>		
Transfer to FWCH Operating Account	643,000	217,000
Donation to Women's & Children's Hospital	(222,534)	-
<b>Net Surplus/(Deficit)</b>	<u><u><b>227,844</b></u></u>	<u><u><b>201,972</b></u></u>
 <b>CASH AT BANK 30 JUNE</b>	 <b>438,755</b>	 <b>215,020</b>





**FRIEND'S OF THE WOMEN'S & CHILDREN'S HOSPITAL INC**

**STATEMENT OF INCOME AND EXPENDITURE  
for the Financial Year ended 30 June 2017  
AUXILIARIES DIVISION**

	\$ 2017	\$ 2016
<b>INCOME</b>		
Interest	393	460
Donations	14,170	10,860
Merchandise	488	3,617
Minor Raffles	9,793	21,282
Sundries	1,151	3,219
Special Fundraising	<u>158,061</u>	<u>161,989</u>
Total Income	184,056	201,427
<b>EXPENDITURE</b>		
Merchandise	219	1,698
Other Expenses	1,985	16,974
Special Fundraising Expenses	<u>60,759</u>	<u>63,525</u>
Total Expenditure	62,963	82,197
<b>OPERATING SURPLUS/(DEFICIT)</b>	<b><u>121,093</u></b>	<b><u>119,230</u></b>
<b>OTHER INCOME &amp; EXPENSE</b>		
Transfer to FWCH Operating Account	(263,000)	(17,000)
Donation to Women's & Children's Hospital	(1,744)	-
<b>Net Surplus/(Deficit)</b>	<b><u>(143,651)</u></b>	<b><u>102,230</u></b>
 <b>CASH AT BANK 30 JUNE</b>	 <b>114,147</b>	 <b>222,887</b>



**FRIEND'S OF THE WOMEN'S & CHILDREN'S HOSPITAL INC**

**STATEMENT OF INCOME AND EXPENDITURE**

**for the Financial Year ended 30 June 2017**

**SHOPS AUXILIARY DIVISION**

	\$ 2017	\$ 2016
<b>INCOME</b>		
Shop Sales	1,008,699	1,063,208
Interest	8,546	12,893
Donations	<u>5,203</u>	<u>5,785</u>
Total Income	1,022,448	1,081,886
<b>EXPENDITURE</b>		
Food	219,372	217,360
Drinks	157,740	175,843
Confectionery	57,277	65,884
Magazines & Newspapers	25,601	32,336
Flowers	14,736	17,004
Gifts, Toys, Cards	117,651	111,786
Clothing	7,447	15,827
Overheads	27,489	26,564
Other Expenses	<u>11,515</u>	<u>1,705</u>
Total Expenditure	638,828	664,309
<b>OPERATING SURPLUS/(DEFICIT)</b>	<u><b>383,620</b></u>	<u><b>417,577</b></u>
<b>OTHER INCOME &amp; EXPENSE</b>		
Transfer to FWCH Operating Account	(200,000)	(200,000)
Donation to Women's & Children's Hospital	(180,000)	(200,000)
<b>Net Surplus/(Deficit)</b>	<u><b>3,620</b></u>	<u><b>17,577</b></u>
 <b>CASH AT BANK 30 JUNE</b>	 <b>390,849</b>	 <b>390,799</b>



**FRIEND'S OF THE WOMEN'S & CHILDREN'S HOSPITAL INC**

**STATEMENT OF INCOME AND EXPENDITURE  
for the Financial Year ended 30 June 2017  
QUEEN VICTORIA AUXILIARY DIVISION**

	\$ 2017	\$ 2016
<b>INCOME</b>		
Donations	2,705	335
Merchandise	55	848
Minor Raffles	-	7,790
Sundries	-	75
Special Fundraising	<u>42,586</u>	<u>35,379</u>
Total Income	45,346	44,427
<b>EXPENDITURE</b>		
Other Expenses	-	-
Special Fundraising Expenses	<u>18,088</u>	<u>17,086</u>
Total Expenditure	18,088	17,086
<b>OPERATING SURPLUS/(DEFICIT)</b>	<u><b>27,258</b></u>	<u><b>27,341</b></u>
<b>OTHER INCOME &amp; EXPENSE</b>		
Transfer to FWCH Operating Account	-	-
Donation to Women's & Children's Hospital	(32,877)	(20,000)
<b>Net Surplus/(Deficit)</b>	<u><b>(5,619)</b></u>	<u><b>7,341</b></u>
<b>CASH AT BANK 30 JUNE</b>	<b>9,619</b>	<b>15,233</b>



## INDEPENDENT AUDITOR'S REPORT

To the members of the Friends of the Women's and Children's Hospital Incorporated

### Report on the Audit of the Financial Report

We have audited the financial report of the Friends of the Women's and Children's Hospital Incorporated, which comprises the statement of financial position as at 30 June 2017, the statement of comprehensive income, statement of changes in equity and statement of cash flows for the year then ended, and notes to the financial statements, including a summary of significant accounting policies, and the Committee of Managements' declaration.

In our opinion the financial report of the Friends of the Women's and Children's Hospital Incorporated has been prepared in accordance with Division 60 of the *Australian Charities and Not-for-Profits Commission Act 2012*, including:

- (a) giving a true and fair view of the Friends of the Women's and Children's Hospital Incorporated's financial position as at 30 June 2017 and of its financial performance for the year then ended; and
- (b) complying with Australian Accounting Standards to the extent described in Note 1, and Division 60 the *Australian Charities and Not-for-profits Commission Regulation 2013*.

### Basis for Opinion

We conducted our audit in accordance with Australian Auditing Standards. Our responsibilities under those standards are further described in the *Auditor's Responsibilities for the Audit of the Financial Report* section of our report. We are independent of the registered entity in accordance with the ethical requirements of the Accounting Professional and Ethical Standards Board's APES 110 *Code of Ethics for Professional Accountants* (the Code) that are relevant to our audit of the financial report in Australia. We have also fulfilled our other ethical responsibilities in accordance with the Code.

We believe that the audit evidence we have obtained is sufficient and appropriate to provide a basis for our opinion.

### Emphasis of Matter - Basis of Accounting

We draw attention to Note 1 to the financial report, which describes the basis of accounting. The financial report has been prepared for the purpose of fulfilling the Friends of the Women's and Children's Hospital Incorporated's financial reporting responsibilities under the ACNC Act. As a result, the financial report may not be suitable for another purpose. Our opinion is not modified in respect of this matter.

### Responsibility of the Committee of Management for the Financial Report

The Committee of Management of the Friends of the Women's and Children's Hospital Incorporated are responsible for the preparation of the financial report that gives a true and fair view and have

14





determined that the basis of preparation described in Note 1 to the financial report is appropriate to meet the requirements of the ACNC Act and the needs of the members. The Committee of Managements' responsibility also includes such internal control as the responsible entities determine is necessary to enable the preparation of a financial report that gives a true and fair view and is free from material misstatement, whether due to fraud or error.

In preparing the financial report, the Committee of Management are responsible for assessing the Friends of the Women's and Children's Hospital Incorporated's ability to continue as a going concern, disclosing, as applicable, matters relating to going concern and using the going concern basis of accounting unless the Committee of Management either intend to liquidate the Friends of the Women's and Children's Hospital Incorporated or to cease operations, or have no realistic alternative but to do so.

The Committee of Management are responsible for overseeing the Friends of the Women's and Children's Hospital Incorporated's financial reporting process.

#### **Auditor's Responsibilities for the Audit of the Financial Report**

Our objectives are to obtain reasonable assurance about whether the financial report as a whole is free from material misstatement, whether due to fraud or error, and to issue an auditor's report that includes our opinion. Reasonable assurance is a high level of assurance, but is not a guarantee that an audit conducted in accordance with the Australian Auditing Standards will always detect a material misstatement when it exists. Misstatements can arise from fraud or error and are considered material if, individually or in the aggregate, they could reasonably be expected to influence the economic decisions of users taken on the basis of the financial report.

As part of an audit in accordance with Australian Auditing Standards, we exercise professional judgement and maintain professional scepticism throughout the audit. We also:

- Identify and assess the risks of material misstatement of the financial report, whether due to fraud or error, design and perform audit procedures responsive to those risks, and obtain audit evidence that is sufficient and appropriate to provide a basis for our opinion. The risk of not detecting a material misstatement resulting from fraud is higher than for one resulting from error, as fraud may involve collusion, forgery, intentional omissions, misrepresentations, or the override of internal control.
- Obtain an understanding of internal control relevant to the audit in order to design audit procedures that are appropriate in the circumstances, but not for the purpose of expressing an opinion on the effectiveness of the Friends of the Women's and Children's Hospital Incorporated's internal control.
- Evaluate the appropriateness of accounting policies used and the reasonableness of accounting estimates and related disclosures made by the Committee of Management.



- Conclude on the appropriateness of Committee of Managements' use of the going concern basis of accounting and, based on the audit evidence obtained, whether a material uncertainty exists related to events or conditions that may cast significant doubt on the Friends of the Women's and Children's Hospital Incorporated's ability to continue as a going concern. If we conclude that a material uncertainty exists, we are required to draw attention in our auditor's report to the related disclosures in the financial report or, if such disclosures are inadequate, to modify our opinion. Our conclusions are based on the audit evidence obtained up to the date of our auditor's report. However, future events or conditions may cause the Friends of the Women's and Children's Hospital Incorporated to cease to continue as a going concern.
- Evaluate the overall presentation, structure and content of the financial report, including the disclosures, and whether the financial report represents the underlying transactions and events in a manner that achieves fair presentation.

We communicate with the Committee of Management regarding, among other matters, the planned scope and timing of the audit and significant audit findings, including any significant deficiencies in internal control that we identify during our audit.

#### Other Matter

Cash donations and receipts are a significant source of fundraising revenue for the Friends of the Women's and Children's Hospital Incorporated. The Friends of the Women's and Children's Hospital Incorporated has determined that it is impracticable to establish control over the collection of cash donations prior to entry into its financial records. Accordingly, as the evidence available to us regarding fundraising revenue from this source was limited, our audit procedures with respect to cash donations and receipts had to be restricted to the amounts recorded in the financial records. We therefore are unable to express an opinion on whether the recorded cash donations of the Friends of the Women's and Children's Hospital Incorporated are complete.



Debra Arnold **CPA**

**Director**

**Registered Company Auditor # 45005**



ABN 58 608 942 221  
PO Box 28  
CHRISTIES BEACH SA 5165

**Date:** 6 September 2017

16





**Friends**  
of the Women's &  
Children's Hospital Inc.

[www.wchfriends.net.au](http://www.wchfriends.net.au)